



ESCALADE

ESCALADE





It drives with authority on every road.
It turns heads in admiration.
It makes every arrival feel like a grand entrance.
It leaves you in awe of its beauty.
Because the Escalade is born with one purpose.
To be bold in everything it does.
It's this brave stance that makes this powerhouse
command respect and thrive wherever it goes.
It's truly the original icon.
It's truly a Cadillac.

THE 2020 ESCALADE

THE ALPHA ON THE ROAD

When you drive the 2020 Escalade, you're not driving an ordinary machine. You're driving a piece of heritage. A legacy built over 20 years is what sets it apart and makes it a true Cadillac. Bold exterior lines that cut through clutter complimented by the lavish interior, the Escalade rightfully wears the badge of immaculate design. And does it effortlessly.

Be it the craftsmanship, innovation, comfort or even performance; the 2020 Escalade offers you a remarkable experience. Every single feature in the Escalade has been designed so meticulously that it leaves no room for you to want more. Its bold Platinum grille with Galvano chrome and the 22" premium painted wheels with chrome inserts are proof of its sophistication, strength and style. Refined from every angle.





A vision that is crystal clear. The iconic Escalade headlamps are built with five crystals, fully stacked with all-LED technology to light up the road ahead with a crisp white light. And to conquer every curve are its LED Cornering Lamps that project light into curves when the vehicle is turning.

Where form meets function. The 2020 Escalade has the unique quality of being sturdy and flexible at the same time. It adapts to suit your every need with its power-folding third-row seats that create up to 3398 liters¹ of maximum cargo space. Now go from luxury to utility with the touch of a button.

¹ Cargo and load capacity limited by weight and distribution. Maximum cargo space achieved with second and third rows folded down.

A detailed view of the interior of a 2020 Cadillac Escalade Premium Luxury. The image shows the front and second-row seats upholstered in rich, textured Kona Brown leather. The seats feature intricate stitching and a perforated leather section on the lower backrest. The Cadillac logo is visible on the headrests. The overall atmosphere is one of luxury and craftsmanship.

THERE'S NO ROOM FOR THE ORDINARY

The finest quality leather. The flawless seams. The intricate stitching. And craftsmanship at its best. This is what you witness when you step into the 2020 Escalade. So, if you want to experience the comfort of Kona brown seats, grip the Turin leather steering wheel and surround yourself with elegance; inside the 2020 Escalade is the place to be.



(A)



(B)

Enjoy the view. Even if it's behind you. There's nothing conventional in the 2020 Escalade. Not even the rear-view mirror¹. The Rear Camera Mirror is built with the ability to stream video through it. It offers you a better field of view with lesser obstructions than regular mirrors, but can also revert to standard view. All of this, with just a toggle.

You can clearly see the additional visibility and expanded view of what is directly behind the vehicle with the Rear Camera Mirror (A) compared with the traditional rear view mirror (B).

¹. Read the vehicle Owner's Manual for important feature limitations and information.

BUILT TO BE BRAVE



The stance of a warrior. The attitude of a conqueror. The spirit of the bold. And the power of a beast. The 2020 Escalade commands attention from every angle.

This formidable SUV is built with a Platinum grille with a bold Galvano chrome finish and stunning headlamps. It stands tall with its 22" premium painted wheels with chrome inserts that are not only stylish, but save weight and add strength too. As you approach the rear end of the 2020 Escalade, you'll notice the attention paid to every detail. It's innovatively engineered LED Light Blade taillamps deliver better vision.

An Invisible Rear Wiper that's concealed when not in use - protecting it from outside elements, while enhancing its clean design lines.

It's no wonder that the 2020 Escalade creates a presence that's impossible to ignore.

142

EXTERIOR
LED LIGHTS

22"

STANDARD
PREMIUM WHEELS



Top left: Full LED headlamps. Top: Escalade Platinum in Black Raven with 22" premium painted wheels with chrome inserts. Bottom: Shadow Metallic paint; Light Blade taillamps. Both top and bottom vehicles shown with available equipment.



Welcome to the finer side of life. The moment you step inside the 2020 Escalade, you know it is built with a passion to be grand. An acoustic front glass and triple-sealed inset doors cancels out ambient sounds to give you an extraordinarily quiet interior. This gives you every chance to listen to the outstanding 16-speaker Bose Centerpoint® Surround Sound system at its best. And when it comes to entertainment, the Rear Seat Entertainment (RSE) System is more than you can imagine. It is fully equipped with a 9" diagonal screen, Blu-ray™ playback, MP3 capability and two wireless headphones, HDMI and USB1 ports. Built-in with a Tri-Zone Climate Control, the 2020 Escalade allows the driver, the front passenger and rear passengers the ability to adjust their temperatures individually. The focus on individual comfort extends all the way to power-adjustable pedals, function-rich, power-tilt and telescoping heated steering wheel.

And for when you want to kick back and relax, it also offers you additional leg room and seating while comfortably accommodating up to eight passengers. Truly, the experience in the 2020 Escalade is out of this world.

9"
DIAGONAL AVAILABLE
REAR SCREEN

16
SPEAKER BOSE
CENTERPOINT
SURROUND
SOUND SYSTEM

1. Not compatible with all devices.

Top left: Exceptional materials. Bottom left: 16-speaker Bose Centerpoint Surround Sound system. Bottom right: Spacious interior. Above: Rear Seat Entertainment System.



It's not a drive. It's a sentiment. The 2020 Escalade was built for every season, every terrain, every occasion and every mood. It's no wonder the comforts of this cabin can feel extraordinary. With features like heated front and rear outboard seats and front seats that cool, it takes individual comfort to a higher degree.

If a car is built with multidirectional massaging front seats that can be adjusted in 18 different ways, you know it's out to pamper you. Taking it one step further is its lavish Semi-Aniline leather, its leather-wrapped steering wheel and instrument panel. And to top it all. The Suede microfiber headliners and door trims finished with posh wooden accents will get you to feel your finest, instantly.

17

UP TO 17 LITERS OF
CENTER CONSOLE SPACE

18-WAY

AVAILABLE ADJUSTABLE
MASSAGING FRONT SEATS



Facing page: Heated front seats. This page, top left: Platinum Rear Seat Entertainment System. Top right: Center console storage. Bottom: Exclusive materials.

SURROUNDED BY AVAILABLE SAFETY INNOVATIONS



THINKING ONE STEP AHEAD

With the Forward and Reverse Automatic Braking feature, the 2020 Escalade can sense forward and reverse collisions and automatically engage the brakes. This helps in reducing crash impact and keeps you safe.

THE FORWARD THINKER

The Forward Collision Alert monitors the traffic ahead and alerts you of any potential dangers it senses.

TECHNOLOGY FOR A RAINY DAY

When the 2020 Escalade sense rain, the Rainsense Wipers are automatically engaged and adjusted as per the rain's intensity. As the wipers are activated, the Auto-Dry brakes automatically position the brake pads closer to the rotors to reject moisture and also improve performance.

WHEN SAFETY IS RESOLUTE

The road can be unpredictable. During emergency braking or sudden maneuvers, the Automatic Seat Belt Tightening gets activated to keep you braced. And when the situation reverts to normal, so does the seatbelt.

STAYING IN LINE WITH STRAIGHT ROAD AHEAD

The 2020 Escalade, built with the Lane Keep Assist, sense lane boundaries and can gently turn the steering wheel if the system anticipates the vehicle leaving the lane unintentionally or without using indicators. Working in parallel with the Safety Alert Seat, the Lane Departure Warning shows you a visual alert in the cluster and sends you a warning pulse through the seat cushion when it crosses the detected lane marking.

NOTHING GOES UNNOTICED

The Standard Lane Change Alert is a feature that monitors the area beyond the side blind zone and alerts you on your side mirror if it senses a rapidly approaching vehicle. The Standard Side Blind Zone Alert monitors your blind zone and alerts you of any vehicle that may be in the adjacent lane. In both features, the icon on the side mirror flashes to alert you if you've activated your turn signal.

LEAVES NOTHING BEHIND

The Rear Vision Camera automatically displays a live stream of the immediate area behind you. The Cadillac user experience screen sets guidelines on the image and maps out your intended trajectory, to help anything that might be in the way.

IT'S SEEKS ATTENTION. GENTLY

The Cadillac's patented Safety Alert Seat signals you with a gentle pulse to the left, right or both sides, depending on the direction of the threat.

DEMANDS ITS SPACE

The Adaptive Cruise Control- Advanced engages its radar technology to maintain the selected distance between you and the vehicle ahead.

REVERSE MODE REDEFINED

While you're backing out of your parking spot in reverse, the Standard Rear Cross Traffic Alert warns you of oncoming traffic on either side of your vehicle with either an audible alert or a pulse using the Safety Alert Seat feature.

BUILT FOR A HIGHER GROUND

When you're in low-speed Drive or Reverse modes, the Surround Vision feature gives you a bird's-eye view of the area around you. This view helps you be more aware and also makes low-speed maneuvering easier.

Safety or driver-assistance features are no substitute for the driver's responsibility to operate the vehicle in a safe manner. The driver should remain attentive to traffic, surroundings and road conditions at all times. Visibility, weather and road conditions may affect feature performance. Read the vehicle Owner's Manual for important feature limitations and information.



The heritage of yesterday. The technology of tomorrow. Since its inception, the Escalade has been a car ahead of its time. Its advanced technological features are designed to understand you. A Keyless Access to connect you to your vehicle enabling you to lock or unlock your doors. A Push-Button Start that gets you going without even needing your key. An Adaptive Remote Start system that lets you start your engine using the key fob from up to 100 yards away while simultaneously adjusting the interior temperature to welcome you. Wireless Charging¹ to power up your devices wherever you may go.

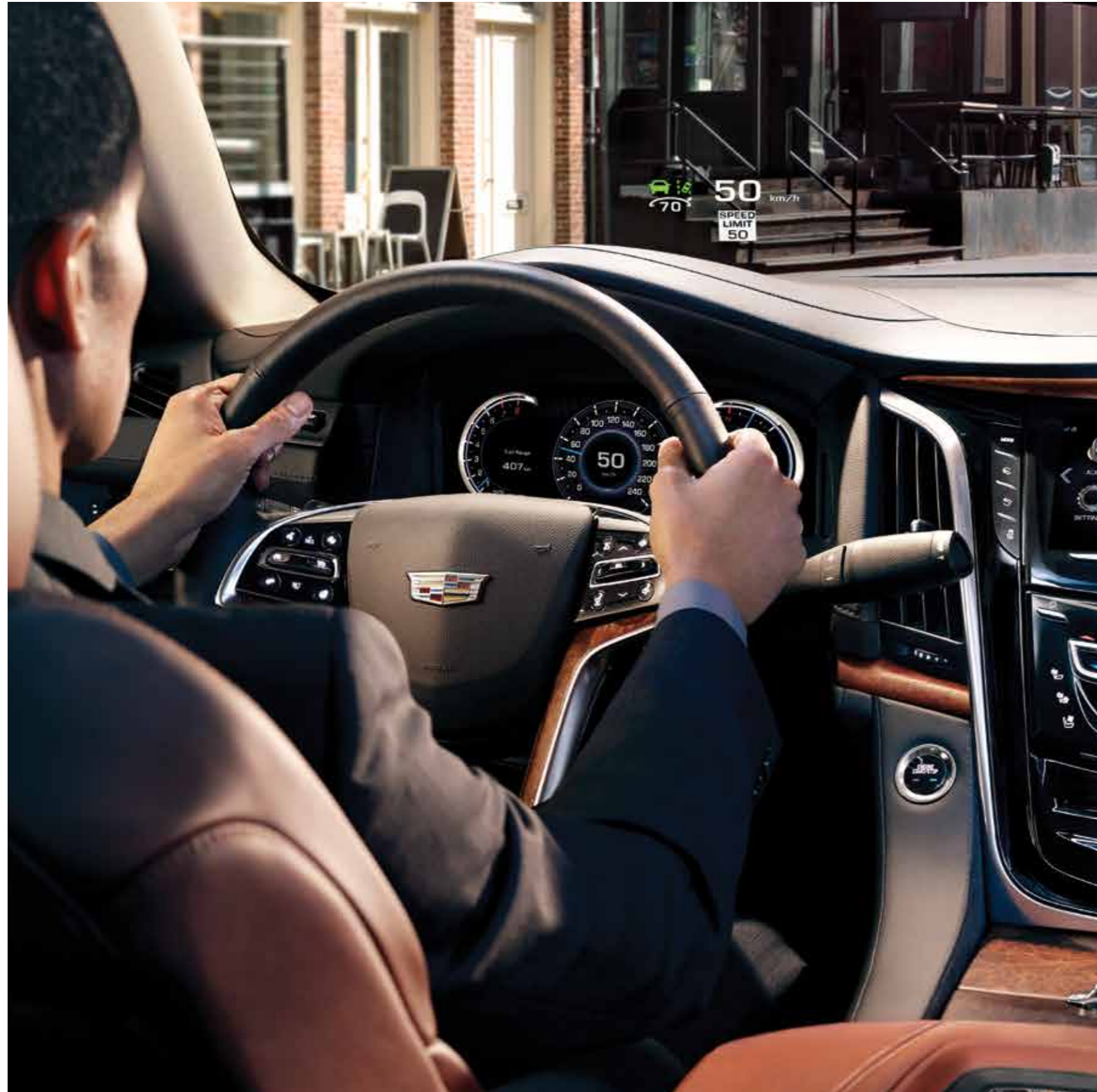
The 2020 Escalade- it drives you right into the heart of the future.

91

START YOUR VEHICLE
UP TO 91 METERS AWAY
WITH REMOTE START



1. The system wirelessly charges one PMA- or Qi-compatible mobile device. Some phones have built-in wireless charging technology and others require an adapter/back cover. To check for phone or other device compatibility, see my.cadillac.com/learn or consult your carrier.



Contemporary design Futuristic technology. The beauty of the 2020 Escalade is equaled by its brains. Its technology brings you the information you need, instead of you looking for it. The Head-Up Display (HUD) projects selected information onto the windshield, allowing you to keep your eyes on the road at all times. With the reconfigurable 12" LCD gauge cluster, you can always be in control and choose how you want to see vehicle entertainment, communication and navigation information. Keeping you alert at all times is a Surround Vision that shows you a panoramic view of the area surrounding your vehicle when you are in low-speed Drive or Reverse modes.

And when you're parking, who needs hands. What makes the 2020 Escalade incredible is the Automatic Parking Assist¹ that steers itself help you park in parallel and perpendicular spaces, while still keeping you in control of gears, acceleration and braking.

1. Safety or driver-assistance features are no substitute for the driver's responsibility to operate the vehicle in a safe manner. The driver should remain attentive to traffic, surroundings and road conditions at all times. Visibility, weather and road conditions may affect feature performance. Read the vehicle Owner's Manual for more important feature limitations and information.

12"

STANDARD RECONFIGURABLE
LCD GAUGE CLUSTER

4

VIEW MODES WITH AVAILABLE
HEAD-UP DISPLAY

IT'S THE ROAR THAT MAKES IT THE KING



It can run like wild and do it with ease. The 2020 Escalade is the absolute specimen of where a dynamic performance and poised handling go hand in hand.

The 6.2L 420-hp V8 makes it a beast at heart. The 10-speed automatic transmission that moves between gears seamlessly makes it swift. Engine technologies like Continuous Variable Valve Timing, Direct Injection and Active Fuel Management that ensure its 621 Nm of torque is harnessed efficiently, which says nothing but agility. The Four-Wheel Drive that let's you select from among AUTO mode, 2WD and 4WD HI for everyday driving or 4WD LOW for more challenging conditions speaks highly of its adaptability. And the Trailering Package with 3674 Kg maximum trailering capacity¹ is all about its power and endurance.

This is what makes the 2020 Escalade the ultimate predator on every road.

420 hp

V8 ENGINE

10

SPEED AUTOMATIC
TRANSMISSION

3674

KG MAXIMUM
TRAILERING
CAPACITY¹

¹ Before you buy a vehicle or use it for trailering, carefully review the trailering section of the vehicle Owner's Manual. The weight of passengers, cargo and options or accessories may reduce the amount you can tow.



2020 ESCALADE AND ESCALADE ESV STANDARD FEATURES

DRIVETRAIN

6.2L V8 Engine 420 hp and 621 Nm @ 4100 rpm with Active Fuel Management, Variable Valve Timing, Spark Ignition Direct Injection and an external oil cooler
Differential Heavy-duty locking rear
Transmission Heavy-duty 10-speed automatic, manual mode, Tow/Haul mode and external oil cooler
4-Wheel Drive Driver-selectable, 2-speed transfer case: 2WD, Automatic, 4WD HI, 4WD LOW and Neutral

CHASSIS AND SUSPENSION

Brakes 4-wheel vented disc with anti-lock system and Duralife rotors and Hill Start Assist
Steering Rack-and-pinion with variable electric power assist Suspension Independent front with coil-over-shock design/5-link rear and automatic load leveling
 Magnetic Ride Control with selectable Sport mode
Trailer Equipment Heavy-duty

EXTERIOR

Active Aero Grille Shutters
Assist Steps Integrated
Capless Fueling System
Glass Acoustic windshield and front side, solar-absorbing windshield
Keyless Access With passive entry for all exterior doors and rear liftgate
Liftgate Hands-free with programmable memory height
Lighting Full-LED headlamps, high and low beams, Cadillac signature Daytime Running Lamps
 Full-LED Light Blade taillamps
Mirrors Rearview, heated, power-adjustable, power-folding, curb-view assistance, turn-signal indicators, puddle lamps and driver-side automatic dimming
Wheels 22" 7-spoke alloy with Chrome inserts/Pearl nickel finish (see foldout for more details)
Wipers Rainsense front
 Rear integrated, intermittent with washer

INTERIOR

Adaptive Remote Start
Adjustable Pedals Power with memory
Audio System Premium 16-speaker Bose® Centerpoint® Surround Sound system, 3 USB ports¹ and auxiliary audio connectivity, CD/MP3 single-disc player.
Bluetooth®² Hands-Free Calling and with Natural Voice Recognition
Cadillac user experience³ with embedded navigation Information and media control system with 8" full-color diagonal LCD capacitive multi-touch screen,
Center Console
 Dual cupholders with cover
 Wireless Charging⁴ for mobile devices
 Covered storage with auxiliary power outlet and 2 USB ports¹, 230V power outlet and auxiliary power outlet for second-row passengers
Cruise Control Electronic, with resume speed
Gauge Cluster, Reconfigurable 12" Driver Information Center (DIC) with 2 themes: Balanced and Enhanced
Keyless Access With Push-Button Start
LED Illumination of the interior, door handle releases, door storage, console and footwell areas
Memory Package Includes 2 presets for driver-seat position, exterior rearview mirrors, power-tilt and -telescoping steering column and power-adjustable pedals
Mirror Automatic-dimming rearview
Navigation⁵ Integrated with Cadillac user experience³
Seating
 Leather seating surfaces (first and second row)
 Front bucket, with 12-way power adjustment including 4-way power lumbar control
 Heated and cooled front seats with 3 settings
 Heated second row with 3 settings
 Second-row 60/40 split bench, manual fold-and-tumble
 Third-row 60/40 split bench, power fold-flat, up and down
Steering Column Power-tilt and -telescoping
Steering Wheel Heated, leather-wrapped with fingertip controls for Driver Information Center, audio, Bluetooth phone interface and cruise control
Tire Pressure Monitoring System Does not monitor spare tire

Tri-Zone Climate Control Automatic with individual settings for driver, front passenger and rear seating areas
 Universal Home Remote 3-channel programmable Windows Power with driver and front-passenger express- up/-down and rear passenger express-down

SAFETY AND SECURITY

Airbags⁵ Driver and front-passenger dual-stage frontal; driver seat-mounted Front Center Airbag; driver and front-passenger seat-mounted side-impact for thorax and pelvic protection; and head-curtain for outboard seating positions with rollover sensor
Automatic Parking Assist
Park Assist⁶ Front and Rear
Rear Vision Camera⁶ With guidelines
StabiliTrak Electronic Stability Control With Rollover Mitigation
Surround Vision⁶ Bird's-eye view of vehicle
Theft-Deterrent System Engine immobilizer

PREMIUM LUXURY

Enjoy Standard Features + these enhancements:

Assist Steps Power-retractable with LED ground illumination
Driver Assist Package⁶
 Adaptive Cruise Control—Advanced with full-speed range, switchable
 Automatic Seat Belt Tightening
 Electric Parking Brake
 Forward Collision Alert
 Forward and Reverse Automatic Braking
 IntelliBeam automatic high-beam on/off
 Lane Keep Assist with Lane Departure Warning
 Rear Camera Mirror⁶ with rear camera washer
Head-Up Display 4-color reconfigurable
 Seating Second-row 60/40 split bench, power-release fold-and-tumble
Sunroof Power tilt and slide with express-open/-close and sunshade
Rear Seat Entertainment (RSE) System Blu-ray capable; includes 9" diagonal full-color fold-down screen; remote control; HDMI and USB ports¹; LED-backlit display; 2 two-channel digital wireless headphones (4 with ESV); and third-row 9" diagonal full-color fold-down screen (Escalade ESV only)
Front Cornering Lamps, LED
Illuminating Door Handles

AVAILABLE FEATURES

Seating Second-row bucket, power-release fold and-tumble
Wheels (see foldout for more details)
 22" dual 7-spoke Ultrabright-finish aluminum
 22" 12-spoke polished

PLATINUM

Enjoy Premium Luxury Features + these enhancements:

Front Console Compartment Cooled with covered storage, large and small storage bins, dual cupholders, electronic climate controls and second-row heated seat controls (inside console; auxiliary power outlet, 2 USB ports¹ and auxiliary audio port), 230V outlet and auxiliary power outlet on the back side of console
Leather-Wrapped Instrument Panel Upper door panels and center console
Platinum Sill Plates
Premium Floor Mats
Seating Semi-Aniline leather seating surfaces (first and second row), full Mulan leather (third row), 18-way adjustable seats with massage (3-way driver side, 2-way passenger side)
 Second-row bucket, power-release foldand-tumble
Sueded Microfiber Headliner and Pillars
Unique Exotic Wood
Unique Grille Design
Wheels 22" 9-spoke aluminum with premium paint and chrome inserts (see foldout for more details)

AVAILABLE FEATURES

Seating Second-row, 60/40 split bench, power-release fold-and-tumble
Wheels (see foldout for more details)
 22" 12-spoke polished aluminum

1. Not compatible with all devices. 2. Go to my.cadillac.com to find out which phones are compatible with the vehicle. 3. Functionality varies by model. Full functionality requires compatible Bluetooth and smartphone, and USB connectivity for some devices. 4. The system wirelessly charges one PMA- or Qi-compatible mobile device. Some phones have built-in wireless charging technology and others require a special adapter/back cover. To check for phone or other device compatibility, see my.cadillac.com/learn or consult your carrier. 5. A NOTE ON CHILD SAFETY: Always use seat belts and the correct child restraint for your child's age and size, even with airbags. Even in vehicles equipped with the Passenger Sensing System, children are safer when properly secured in a rear seat in the appropriate infant, child or booster seat. Never place a rear-facing infant restraint in the front seat of any vehicle equipped with an active frontal airbag. See your vehicle Owner's Manual and child safety seat instructions for more safety information. 6. Read the vehicle Owner's Manual for important feature limitations and information.

OWNER BENEFITS

Our owners deserve it all. That's why 2020 vehicles are backed by a comprehensive suite of owner benefits. To learn more, visit cadillacarabia.com/ae-en/owner-resources

AN IMPORTANT NOTE ABOUT ALTERATIONS AND WARRANTIES

Installations or alterations to the original equipment vehicle (or chassis) as distributed by General Motors are not covered by the General Motors New-Vehicle Limited Warranty. The special body company, assembler, equipment installer or upfitter is solely responsible for warranties on the body or equipment and any alterations (or any effect of the alterations) to any of the parts, components, systems or assemblies installed by GM. General Motors is not responsible for the safety or quality of design, features, materials or workmanship of any alterations by such employers.

ENGINES

Cadillac products are equipped with engines produced by GM Powertrain or other suppliers to GM worldwide. The engines in Cadillac products may also be used in other GM makes and models.

ASSEMBLY

Cadillac vehicles and their components are assembled or produced by different operating units of General Motors, its subsidiaries or suppliers to GM worldwide. We sometimes find it necessary to produce Cadillac vehicles with different or differently sourced components than originally scheduled. Since some options may be unavailable when your vehicle is assembled, we suggest you verify that your vehicle includes the equipment you ordered and that, if there were changes, they are acceptable to you.

A NOTE ON CHILD SAFETY

Always use seat belts and the correct child restraint for your child's age and size, even with airbags. Even in vehicles equipped with the Passenger Sensing System, children are safer when properly secured in a rear seat in the appropriate infant, child or booster seat. Never place a rear-facing infant restraint in the front seat of any vehicle equipped with an active frontal airbag. See the Owner's Manual and the child safety seat instructions for more safety information.

TRAILERING AND OFF-ROAD DRIVING INFORMATION

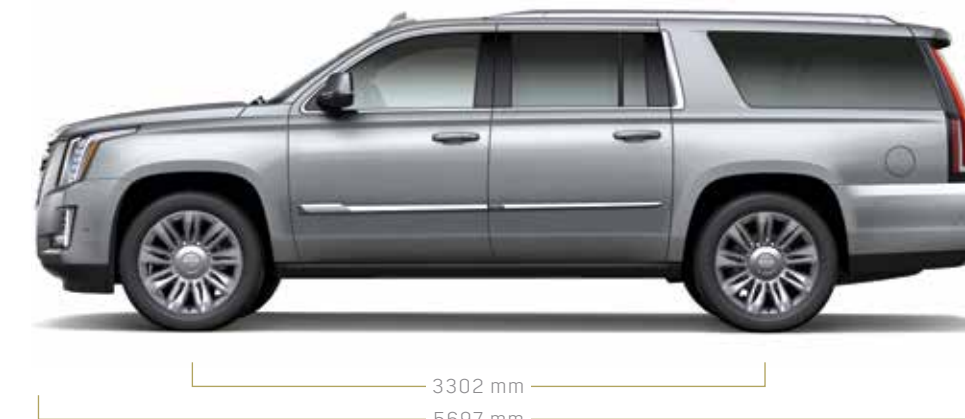
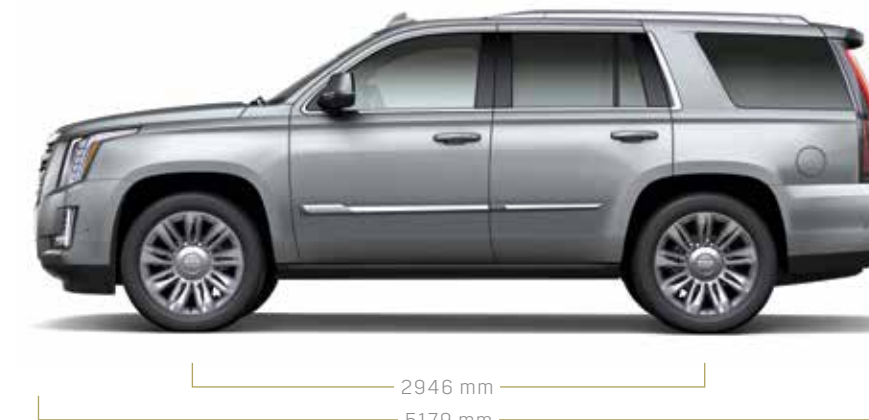
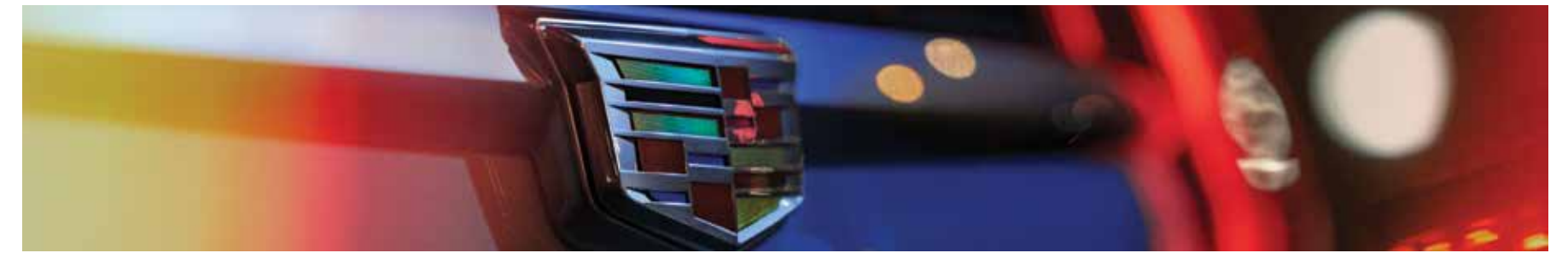
Please go to cadillac.com and carefully review the vehicle Owner's Manual for important safety information about trailering or off-road driving in your vehicle.

IMPORTANT WORDS ABOUT THIS CATALOG

We have tried to make this catalog comprehensive and factual. We reserve the right, however, to make changes at any time, without notice, in prices, colors, materials, equipment, specifications, models and availability. Specifications, dimensions, measurements, ratings and other numbers in this catalog and other printed materials provided at the dealership or affixed to vehicles are approximations based on design and engineering drawings, prototypes and laboratory tests. Your vehicle may differ due to variations in manufacture and equipment. Since some information may have been updated since the time of printing, please check with your Cadillac dealer for complete details. Cadillac reserves the right to lengthen or shorten the model year for any product for any reason or to start and end model years at different times. Certain vehicle features may lose their usefulness over time due to obsolescence from technological changes. Unless otherwise noted, all claims based on GM Mid-Lux Car segment and latest available competitive information. Excludes other GM vehicles.

FLEET ORDERS

Some standard content may be deleted on fleet orders. See dealer for details.



VEHICLE DIMENSIONS

SELECT ESCALADE AND ESCALADE DIMENSIONS All measurements in millimeters.

ESCALADE EXTERIOR

Wheelbase	2946	Overall Height	1890
Overall Length	5179	Front Track Width	1745
Overall Width	2045	Rear Track Width	1745

ESCALADE ESV EXTERIOR

Wheelbase	3302	Overall Height	1880
Overall Length	5697	Front Track Width	1745
Overall Width	2045	Rear Track Width	1745

ESCALADE CAPACITIES

CAPACITIES	4WD	CARGO VOLUME (liter) ³
Max payload (kg) ¹	644	Maximum 2667.7
Max trailer ratings (kg) ²	3674	Behind second row 1461.3
		Behind third row 430.5
		FUEL (liter, approx.) 98

ESCALADE ESV CAPACITIES

CAPACITIES	4WD	CARGO VOLUME (liter) ³
Max payload (kg) ¹	631	Maximum 3423.9
Max trailer ratings (kg) ²	3583	Behind second row 2172
		Behind third row 1113
		FUEL (gal., approx.) 117

1. These maximum payload ratings are intended for comparison purposes only. Before you buy a vehicle or use it to haul people or cargo, carefully review the vehicle loading section of the Owner's Manual and check the carrying capacity of your specific vehicle on the label on the inside of the driver's door jamb.
2. Before you buy a vehicle or use it for trailering, carefully review the trailering section of the Owner's Manual. The weight of passengers, cargo and options or accessories may reduce the amount you can tow.
3. Cargo and load capacity limited by weight and distribution.



22" 7-SPOKE ALUMINUM WHEELS WITH PREMIUM PAINT AND CHROME INSERTS
Standard on Escalade and Escalade ESV Standard and Premium Luxury trims



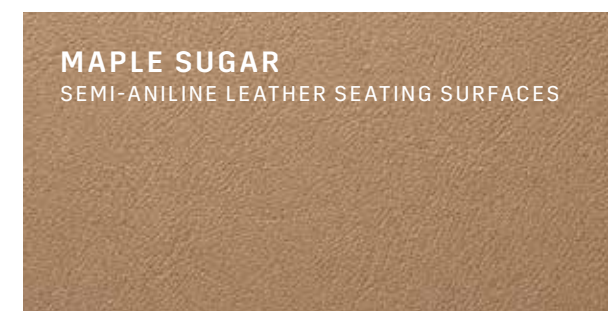
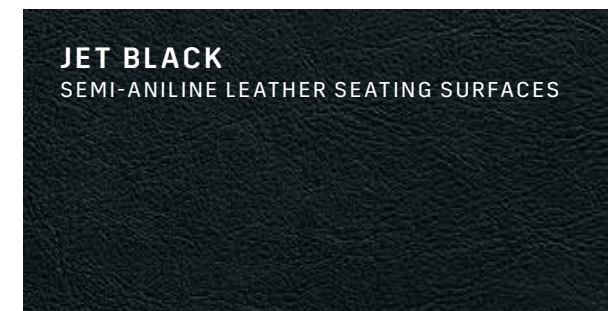
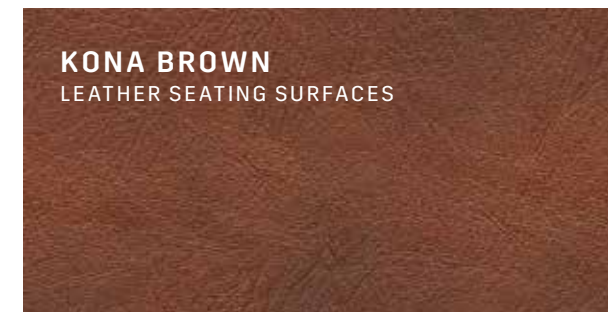
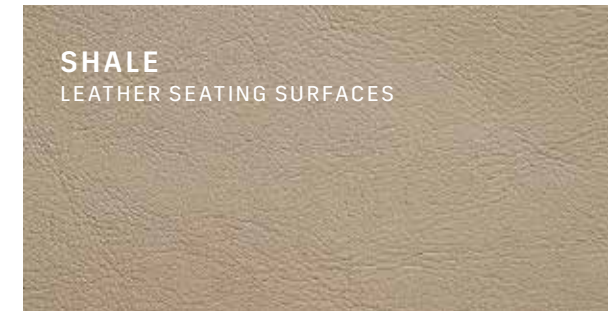
22" DUAL 7-SPOKE ALUMINUM WHEELS WITH ULTRABRIGHT FINISH AND PREMIUM PAINT ACCENTS
Available on Escalade and Escalade ESV Premium Luxury trim



22" DUAL 9-SPOKE ALLOY WITH CHROME INSERTS/ULTRA SILVER METALLIC FINISH
Standard on Escalade and Escalade ESV Platinum trims

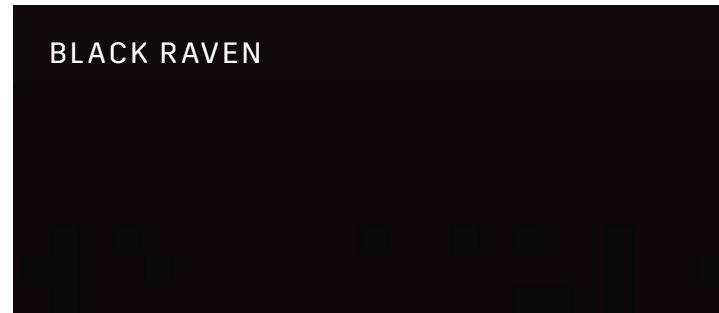


22" 12-SPOKE POLISHED ALUMINUM
Available on Escalade and Escalade ESV Premium Luxury and Platinum trims

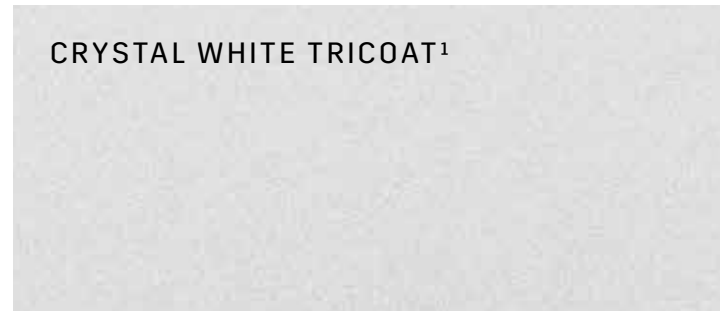




RADIANT SILVER METALLIC



BLACK RAVEN



CRYSTAL WHITE TRICOAT¹



RED PASSION TINTCOAT¹



DARK ADRIATIC BLUE METALLIC²



SHADOW METALLIC²



DARK MOCHA METALLIC²



SATIN STEEL METALLIC²



¹. Available at extra cost. ². Available at extra cost. No additional cost on Platinum.